

Epson 4000 Printer Profile Installation Guide

PC Windows 98/ME, Windows 2000/ NT, Windows XP

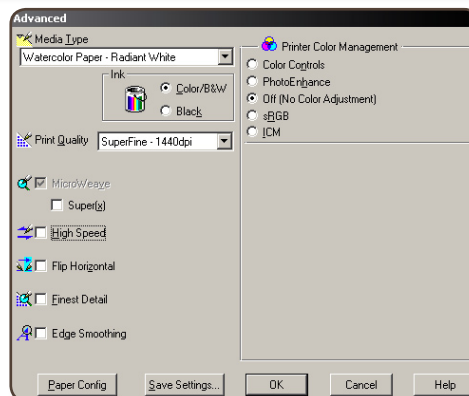
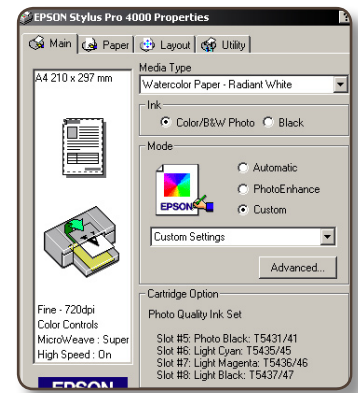
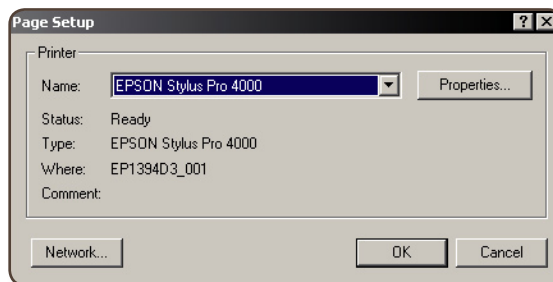
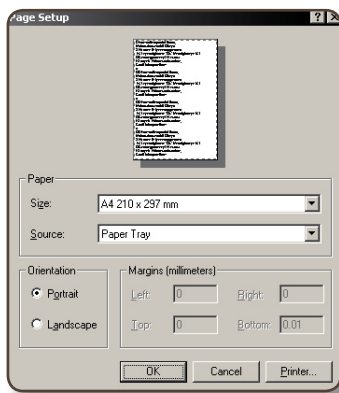
Step 1

Copy the profile which accompanied this pdf document into the following folder:

Windows 98 users: C:/windows/system/color
Windows 2000 users: C:/WINNIT/system32/spool/drivers/color
Windows XP users: C:/WINDOWS/system32/spool/drivers/color

Step 2

Open Photoshop. Open the image to be printed. Go to File - Page Setup. If necessary select "Printer" to reach the "Page Setup" window. Select "Properties", then "Custom" and "Advanced"

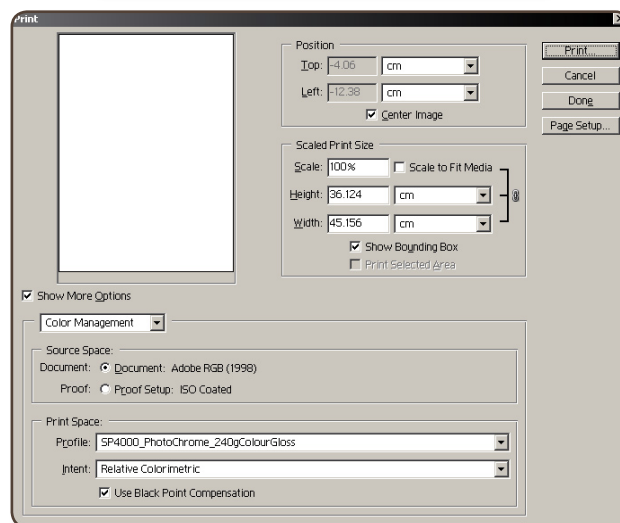


Step 2

Enter the settings as shown.

Step 3

Go to File - Print with Preview
Select the profile from the
"Print Space" drop down menu as
shown:



Step 4

Click "Print"

The Source Space refers to the RGB working space in use (PHOTOSHOP - COLOR SETTINGS). Adobe RGB (1998) is the recommended working space. sRGB, the default selection, is not recommended for photographic ink jet reproduction. See the pdf document "Colour Management 2003" for further details, available for download from the "Support Documents and Downloads" section of the lyson website - www.lyson.com.