



This document explains how to install the ICC Printer profiles for the Canon S800 Photo printer with Lyson Quad Black Inks. There are two profiles available which are suitable for the following papers:

Lyson ProGloss/Satin Papers.

Lyson Fine Art Paper (All Varieties).

PC Setup Advice.

Photoshop places heavy demands upon your PC. Ensure that you have as much RAM installed as you can afford.

In the “Preferences-Plug Ins and Scratch Disk” menu of Photoshop ensure your four Scratch Disk options are allocated to your internal Hard Drive. This allows Photoshop to use your Hard Drive to store temporary data when there is no more RAM available. Never use an external Hard Drive as a Scratch Disk as this will slow Photoshop down.

In the “Preferences-Memory and Image Cache” menu allocate 100% of your system memory to Photoshop. PCs will dynamically allocate RAM according to the number of applications open. Setting the memory allocation to 100% ensures that Windows is able to give Photoshop as much RAM as possible.

Using the profiles is a simple process. Once you have made the correct settings in the print driver you can then select the profile for your paper and the software will do the rest.

For more information on how ICC printer profiles work, setting up Photoshop and calibrating your monitor for accurate colour display, as well as frequently asked questions and troubleshooting, download the “Epson Colour Management” pdf document from the Technical page of the Lyson website, www.lyson.com. Tips on how to get the best from Quad Black inks can be found in the “Quad Black User Guide” pdf file, from the same page of the Lyson website.

The purpose of these profiles is to help smooth out the tonal gradations from shadow to highlight areas. In the unlikely event that the print out is too light or too heavy do not make adjustments to the print driver settings, simply use the tools available in Photoshop to compensate.

Canon S800 Quad Black Instructions

AppleMac, Photoshop 5/6

Step 1.

Drag and drop the profiles into the “Color” folder

C:/Windows/System/Color (win 9x)

C:/Windows/system32/spool/drivers/color
(win2000)

Step 2.

-Restart Photoshop.

Follow the next steps in careful sequence.

Step 3.

-Open an image. Go to **FILE-PAGE SETUP**
(Fig 1) Ignore the Print Modes available at the top. “BJ cartridge” should be set to “Photo”.

Click on “Advanced”

Step 4

-(Fig 2) Select “High Resolution Paper” as the media type. Drag the Print Quality slider to the “Fine” position. Click OK to the print driver message response as the highest print driver quality is required. Ensure that “Photo Optimiser Pro” and “Image Optimiser” are not selected. Then click on the “Colour” tab at the top.

Step 5

-(Fig 3) In the “Colour” options, deselect the “Colour Adjustment” box so that the colour sliders become grey.

Click OK to return to your image.

You have now set your Media Type and resolution and disabled the default colour management so that the Quad Black profiles will work correctly. You can save these settings for later use. Now go to step 6.

Fig 1

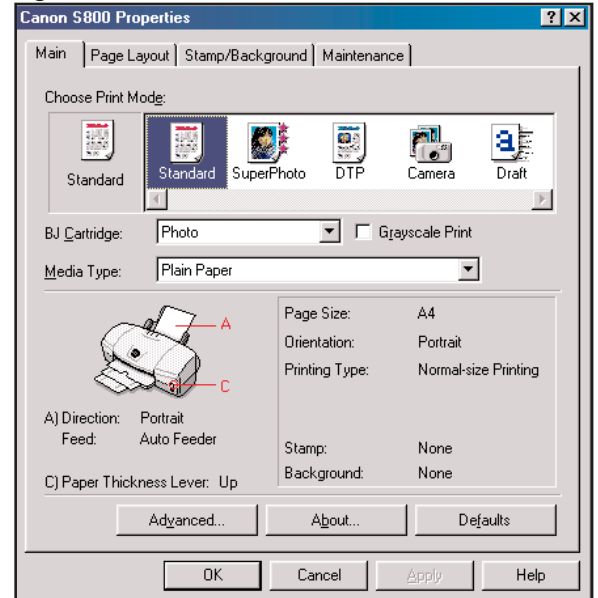


Fig 2

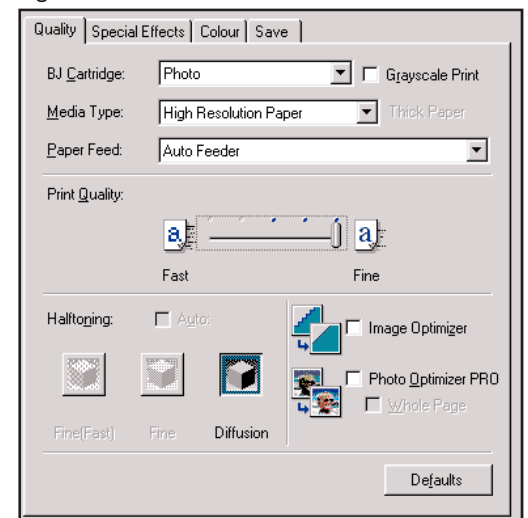
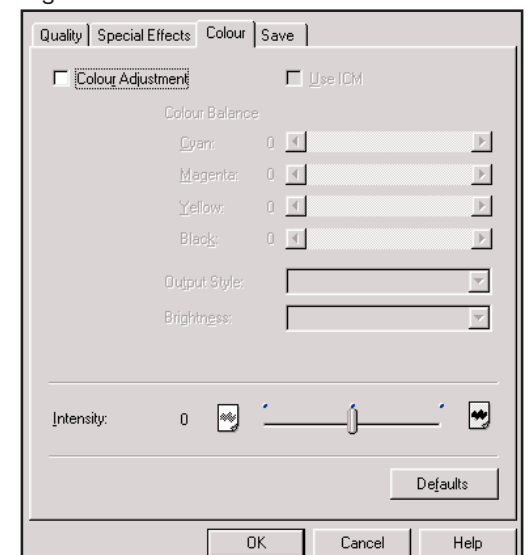


Fig 3



Step 6.

- Go to **FILE-PRINT**
- Select the **Quad Black Profile** for your preferred media in the “**Space**” drop down menu (fig 4).

Photoshop 6 only.

Ensure “**Source Space**” is set to “**Document**”.
Select the required printer profile in the “**Print Space; Profile**” box.

Select “**Perceptual**” as the rendering intent.

Click “**OK**” to start printing.

Fig 4

