



This document explains how to install the ICC Printer profiles for the Epson Stylus Photo 870 and 1270 printers with Lyson Small Gamut Inks. There are two profiles available which are suitable for the following papers:  
Lyson 265g Professional Monochrome Gloss and Satin Papers.  
Lyson Fine Art Paper (All Varieties).

#### PC Setup Advice.

A full version of Photoshop 5 or 6 is required, or any other image manipulation software package that can recognise and utilise RGB ICC Printer Profiles.

Photoshop places heavy demands upon your PC. Ensure that you have as much RAM installed as you can afford.

In the "Preferences-Plug Ins and Scratch Disk" menu of Photoshop ensure your four Scratch Disk options are allocated to your internal Hard Drive. This allows Photoshop to use your Hard Drive to store temporary data when there is no more RAM available. Never use an external Hard Drive as a Scratch Disk as this will slow Photoshop down.

In the "Preferences-Memory and Image Cache" menu allocate 100% of your system memory to Photoshop. PCs will dynamically allocate RAM according to the number of applications open. Setting the memory allocation to 100% ensures that Windows is able to give Photoshop as much RAM as possible. These profiles cannot be guaranteed to run correctly under Windows XP due to differences in the colour management with this operating system.

These profiles help to maintain colour balance across the spectrum and to expand the tonal range that can be achieved. Using the profiles is a simple process. Once you have made the correct settings in the print driver you can then select the profile for your paper and the software will do the rest.

For more information on how ICC printer profiles work, setting up Photoshop and calibrating your monitor for accurate colour display, as well as frequently asked questions and troubleshooting, download the "Epson Colour Management" pdf document from the Technical page of the Lyson website, [www.lyson.com](http://www.lyson.com). Tips on how to get the best from Small Gamut inks can be found in the "Small Gamut User Guide" pdf file, from the same page of the Lyson website.

# Epson Stylus Photo 870/1270 Small Gamut Instructions

PC, Photoshop 5/6

## Step 1.

Drag and drop the profiles into the "Color" folder

C:/Windows/System/Color (win 9x)

C:/Windows/system32/spool/drivers/color (win2000)

C:/WindowsNT/system32/color (WinNT)

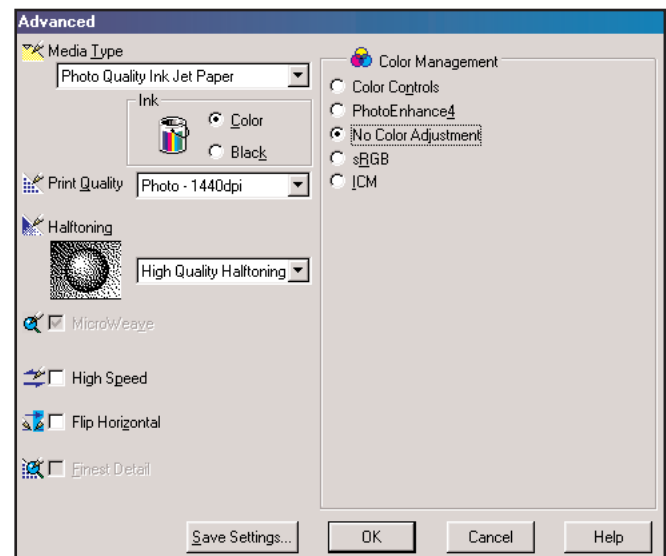
## Step 2.

- Restart Photoshop
- With an image open, go to **FILE-PAGE SETUP.**
- Select "Properties"
- Select "Custom" and then "Advanced"



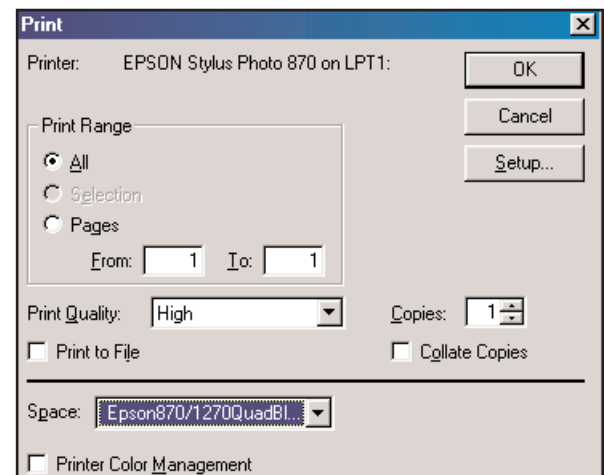
## Step 3.

- For Lyson Fine Art Paper select "Photo Quality Ink Jet Paper" as the Media Type.
- For Lyson 265g Professional Monochrome Gloss and Satin Papers select "Photo Quality Glossy Film"
- Select "Photo-1440dpi" as the Print Quality.
- Do not click "High Speed".
- Select "No Colour Adjustment" from the Color Adjustment options.
- Click "OK"



## Step 4.

- Go to **FILE-PRINT**
- Select the Profile for your preferred media in the "Space" drop down menu.
- Photoshop 6 only.
- Ensure "Source Space" is set to "Document".
- Select the required printer profile in the "Print Space; Profile" box.
- Select "Perceptual" as the rendering intent.



## Step 5.

Now click "Print".