



**This document explains how to install the ICC Printer profiles for the Epson Stylus Photo 870 with Lyson Fotonic Inks. There are five profiles available which are suitable for the following papers:**

**Lyson 170gsm Matt Paper.**

**Lyson 180gsm Fast Dry Gloss Paper.**

**Lyson 240gsm Professional Colour Photo Gloss Paper.**

**Lyson 260g Monochrome “Pro” Gloss / Satin Paper.**

**Lyson Fine Art Paper (All Varieties).**

**Using the profiles is a simple process. Once you have made the correct settings in the print driver you can then select the profile for your paper and the software will do the rest.**

**For more information on how ICC printer profiles work, setting up Photoshop and calibrating your monitor for accurate colour display, as well as frequently asked questions and troubleshooting, download the “Colour Management 2002” pdf document from the Technical page of the Lyson website, [www.lyson.com](http://www.lyson.com).**

**If your print driver does not show all the options listed opposite you will need to update your print driver. Updates are released on the Epson website ([www.epson.com](http://www.epson.com)) and can be easily downloaded and installed. If you do not delete your existing driver before installation the new driver will appear as a copy (1). [Follow this link](#) for redirecting to the Epson print driver web page.**

**Photoshop places heavy demands upon your PC. Ensure that you have as much RAM installed as you can afford.**

**In the “Preferences-Plug Ins and Scratch Disk” menu of Photoshop ensure your four Scratch Disk options are allocated to your internal Hard Drive. This allows Photoshop to use your Hard Drive to store temporary data when there is no more RAM available. Never use an external Hard Drive as a Scratch Disk as this will slow Photoshop down.**

**In the “Preferences-Memory and Image Cache” menu allocate 100% of your system memory to Photoshop. PCs will dynamically allocate RAM according to the number of applications open. Setting the memory allocation to 100% ensures that Windows is able to give Photoshop as much RAM as possible.**

# Epson Stylus Photo 870 Printer Profile Instructions

PC, Photoshop 5/6/7

## Step 1.

Drag and drop or cut & paste the profiles into the “Color” folder

C:/WINDOWS/system32/spool/drivers/color

(windows XP/ Windows 2000)

C:/windows/system/color (Windows 95/8)

C:/winNT/system32/color (WindowsNT)

## Step 2.

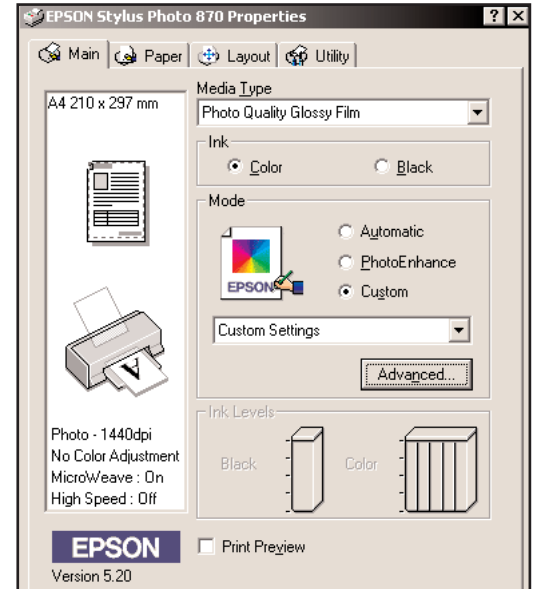
-Restart Photoshop.

## Step 3

-With an image open, go to  
FILE-PAGE SETUP.

-Select “Properties”

-Select “Custom” and then “Advanced”



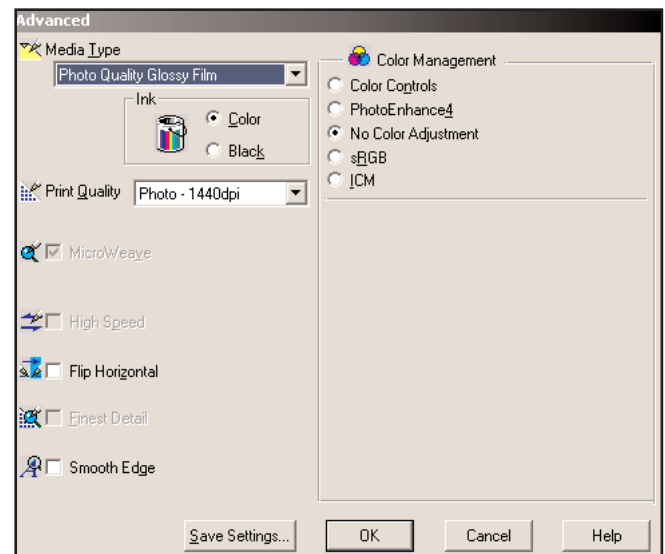
## Step 4

-Select “Photo Quality Glossy Film”  
as the Media Type.

-Select “Photo-1440dpi” as the Print  
Quality.

-Select “No Colour Adjustment” from the  
Color Adjustment options.

Click “OK”



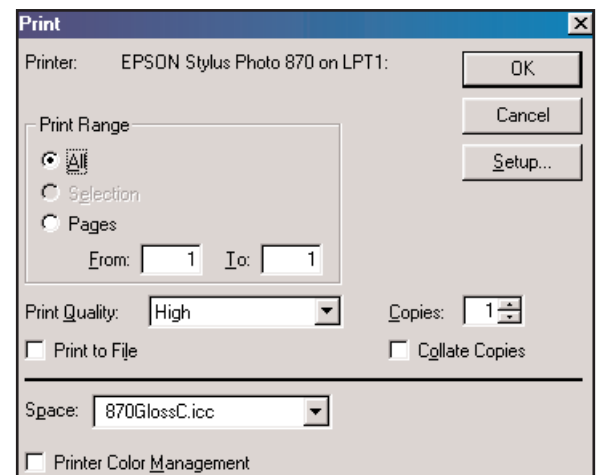
## Step 5.

PS5:

Go to FILE-PRINT

Select the profile for your preferred media  
in the “Space” drop down menu.

Click “OK” to start printing.



## **PS 6:**

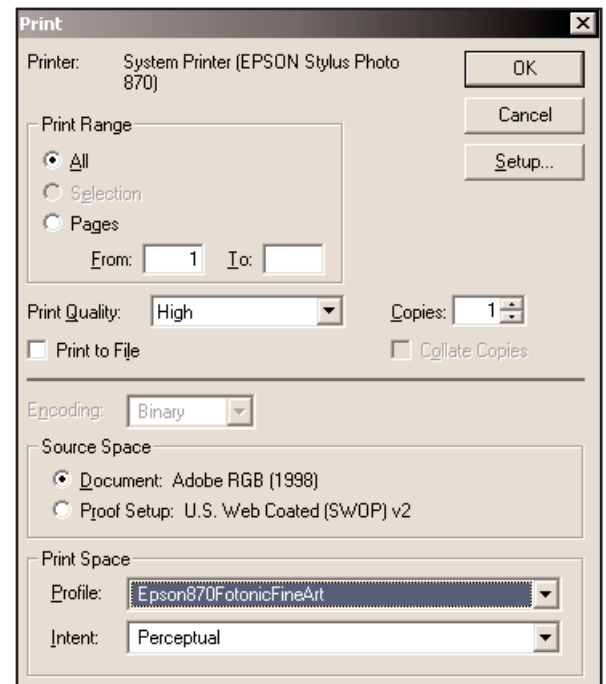
**Go to FILE-PRINT**

**Ensure “Source Space” is set to “Document”.**

**Select the required printer profile in the “Print Space; Profile” box.**

**Select “Perceptual” as the rendering intent.**

**Click “OK” to start printing.**



## **PS7:**

**Go to FILE-PRINT PREVIEW**

**Activate “Show More Options”**

**Select “Color Management” from the drop down menu. Select the Profile from the “Print Space; Profile” box.**

**Select “Perceptual” as the rendering intent.**

**Click Print to start printing.**

