



Introduction.

This document explains how to install the ICC Printer profiles for the Canon S900/9000 Photo printers with Lyson Small Gamut Inks. There are four profiles available which are suitable for the following papers:

Lyson Darkroom Range Matt

Lyson Fine Art Paper (All Varieties)

Lyson Professional 265g Gloss / Satin

Each paper profile comes in two varieties, **D50** and **D65**. These profiles give slightly different tones of neutral grey to suit the display conditions the print will be viewed under. The **D50** profile gives a pleasing neutral grey for viewing under artificial lighting. The **D65** profile gives a pleasing neutral for viewing under daylight conditions such as a room with plenty of natural light. All viewing conditions are different as are peoples expectations of a neutral grey; it is recommended that both profiles are used for your first prints as this will also help you understand the range of colours that SG can reproduce.

PC Setup Advice.

Photoshop places heavy demands upon your PC. Ensure that you have as much RAM installed as you can afford.

There are a large variety of windows operating systems on the market today. Photoshop performance varies only slightly from one operating system to another. Lyson recommends Windows 2000 due to the length of time it has been on the market and it's support for the largest number of print drivers. Lyson printer profiles are compatible with all Microsoft® operating systems.

Using the profiles is a simple process. Once you have made the correct settings in the print driver you can then select the profile for your paper and the software will do the rest.

For more information on how ICC printer profiles work, setting up Photoshop and calibrating your monitor for accurate colour display, as well as frequently asked questions and troubleshooting, download the "Colour Management 2003" document from the Technical page of the Lyson website, www.lyson.com. Tips on how to get the best from Small Gamut inks can be found in the "Small Gamut User Guide" pdf file, from the same page of the Lyson website.

IMPORTANT

If your print driver does not show all the colour control options detailed opposite you will need to update your print driver. Updates are released on the Canon website (www.canon.com) and can be easily downloaded and installed. If you do not delete your existing driver before installation the new driver will appear as a copy (1).

Canon S900_S9000 Small Gamut Instructions

PC operating systems, Photoshop 5/6/7

Step 1.

Drag and drop the profiles into the "Color" folder
C:/WINDOWS/system32/spool/drivers/color
(Windows XP/ Windows 2000)

C:/windows/system/color (Windows 95/8)

C:/winNT/system32/color (WindowsNT)

Step 2.

Restart Photoshop.

Follow the next steps in careful sequence.

Step 3.

Open an image. Go to

FILE - PAGE SETUP

Select **High Resolution Paper** in the
Media Type Menu when using Lyson Fine Art paper or
Lyson's Darkroom Range Matt paper.

Use **High Gloss Photo Film** when
using Lyson's 265g Professional Gloss or
Satin papers.

Print Quality will revert to **High**

Step 4

Next to **Color Adjustment** select
Manual

Click on **Set**

Step 5

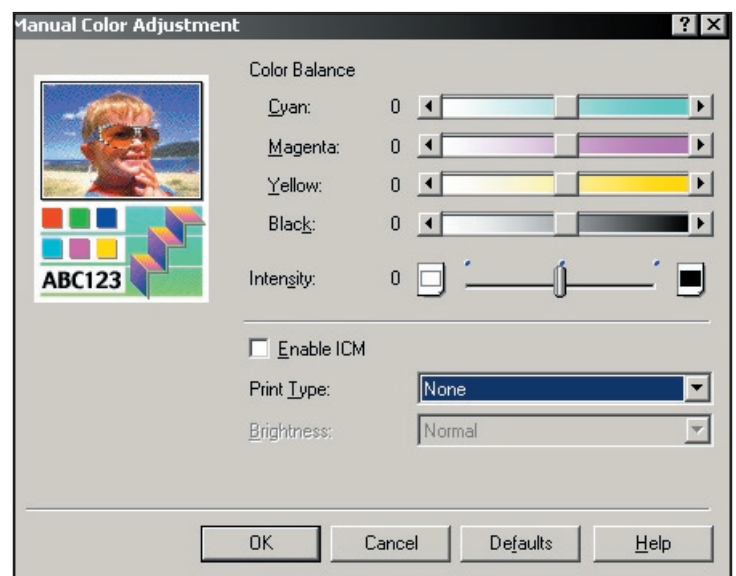
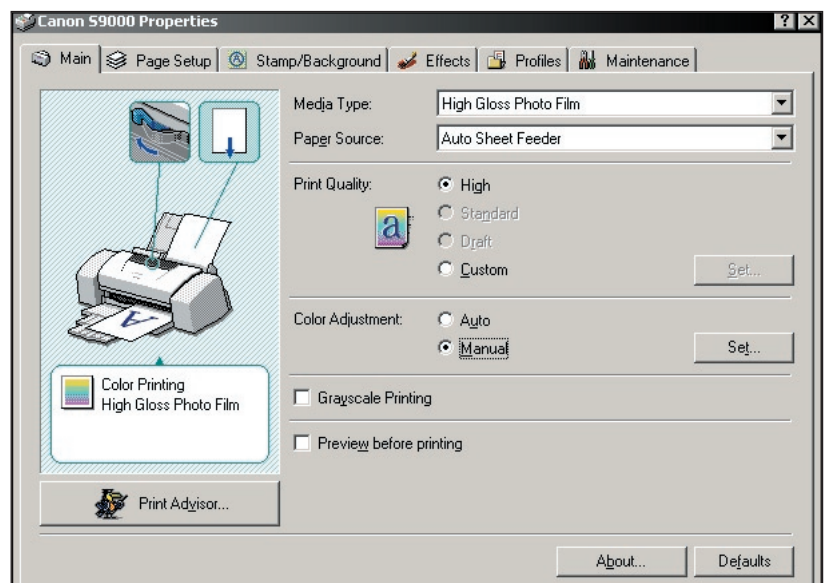
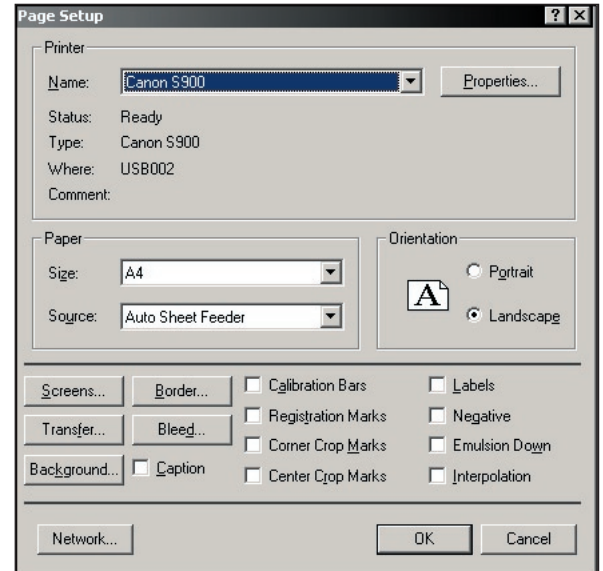
In the **Print Type** drop down menu
select

None

Click **OK**

Note:

**These settings can be added to your
driver as a "Profile" for easy recall
later. See the "Profile" tab in the print
driver for details.**



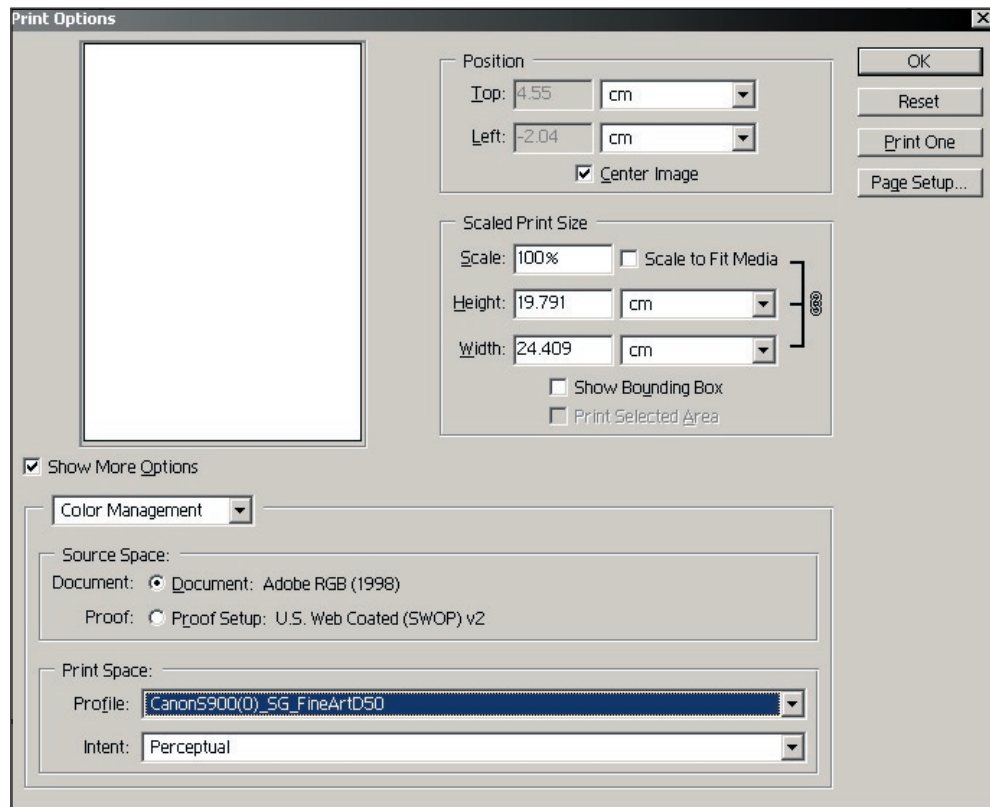
Step 6.

PS5: Go to **FILE-PRINT**

-Select the Small Gamut Profile for your preferred media in the **Space** drop down menu. Click **OK** to start printing.

PS 6: Go to **FILE - PRINT OPTIONS**

PS 7: Go to **FILE - PRINT WITH PREVIEW**



Ensure the **Show More Options** box is ticked.

Select **Color Management** from the drop down menu

Ensure **Source Space** is set to **Document**.

Select the required printer profile in the **Print Space; Profile** box.

Select **Perceptual** as the rendering intent.

Click **OK** to start printing.