



This document explains how to install the ICC Printer profiles for the Canon S900 and S9000 Photo printers with Lyson Fotonic Inks. There are four profiles available which are suitable for the following papers:

Lyson 170g Matt Paper.

Lyson Colour 240g Gloss Paper.

Lyson Professional ProGloss/Satin Papers.

Lyson Fine Art Paper (All Varieties).

PC Setup Advice.

Photoshop places heavy demands upon your PC. Ensure that you have as much RAM installed as you can afford.

In the “Preferences-Plug Ins and Scratch Disk” menu of Photoshop ensure your four Scratch Disk options are allocated to your internal Hard Drive. This allows Photoshop to use your Hard Drive to store temporary data when there is no more RAM available. Never use an external Hard Drive as a Scratch Disk as this will slow Photoshop down.

In the “Preferences-Memory and Image Cache” menu allocate 100% of your system memory to Photoshop. PCs will dynamically allocate RAM according to the number of applications open. Setting the memory allocation to 100% ensures that Windows is able to give Photoshop as much RAM as possible.

Using the profiles is a simple process. Once you have made the correct settings in the print driver you can then select the profile for your paper and the software will do the rest.

For more information on how ICC printer profiles work, setting up Photoshop and calibrating your monitor for accurate colour display, as well as frequently asked questions and troubleshooting, download the “Epson Colour Management” pdf document from the Technical page of the Lyson website, www.lyson.com.

If your print driver does not show all the options listed opposite you will need to update your print driver. Updates are released on the Canon USA website (www.canon.com) and can be easily downloaded and installed. If you do not delete your existing driver before installation the new driver will appear as a copy (1). Follow this link for redirecting to the Canon print driver web page.

Canon S900_S9000 Fotonic Instructions

PC operating systems, Photoshop 5/6/7

Step 1.

Drag and drop the profiles into the “Color” folder

C:/WINDOWS/system32/spool/drivers/color

(windows XP/ Windows 2000)

C:/windows/system/color (Windows 95/8)

C:/winNT/system32/color (WindowsNT)

Step 2.

-Restart Photoshop.

Follow the next steps in careful sequence.

Step 3.

-Open an image. Go to FILE-PAGE SETUP (Fig 1) Ignore the Print Modes available at the top. “BJ cartridge” should be set to “Photo”. Click on “Properties”

Fig 1

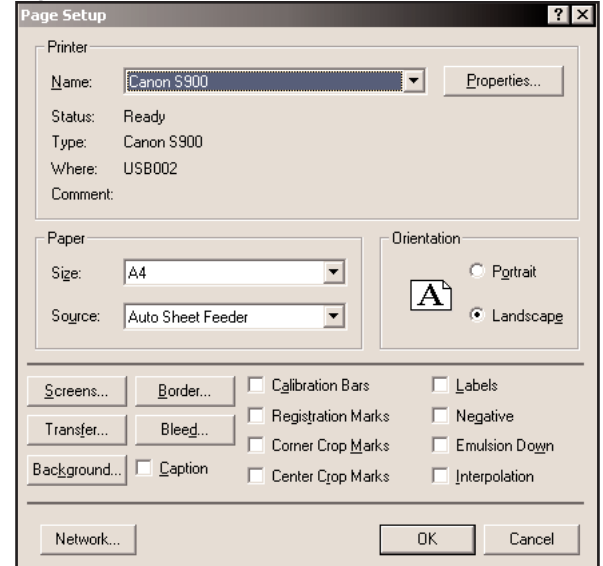
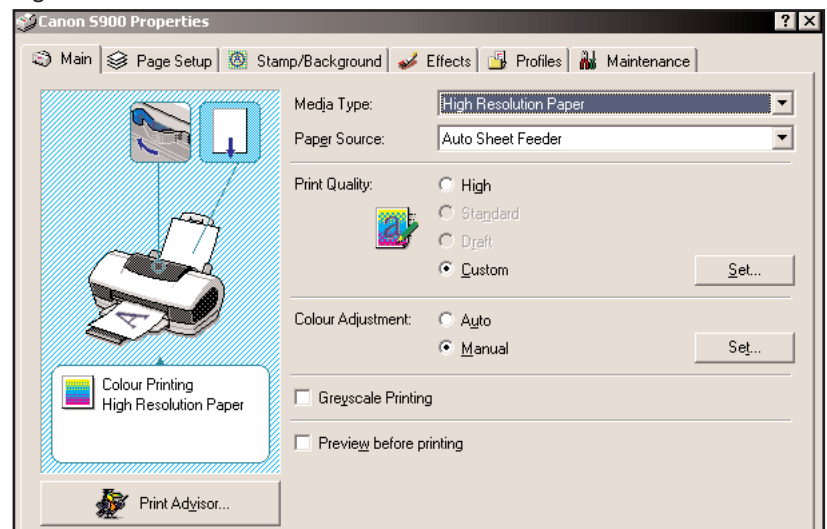


Fig 2



Step 4

-For Gloss and Satin papers select “High Gloss Photo Film”.

-For Fine Art and Matt papers select “High Resolution Paper” as the media type. (fig 2)

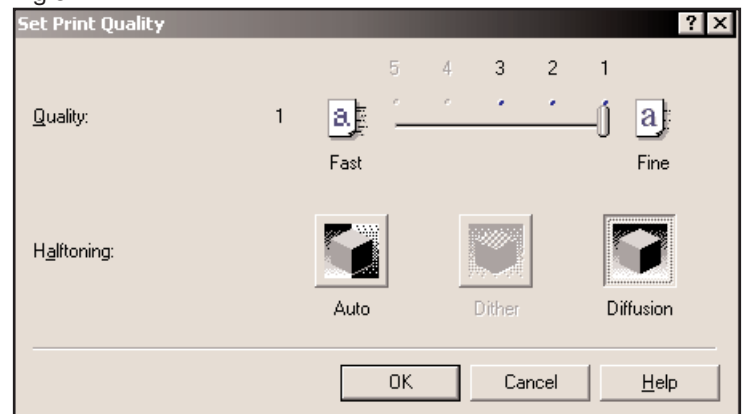
-Select “Manual” as the Print Mode and then the “Details” button.

Step 5

In the “Print Quality” menu select “Custom” and click “Set”.

Drag the Print Quality slider to the “Fine” position (Fig 3). Click “OK”

Fig 3



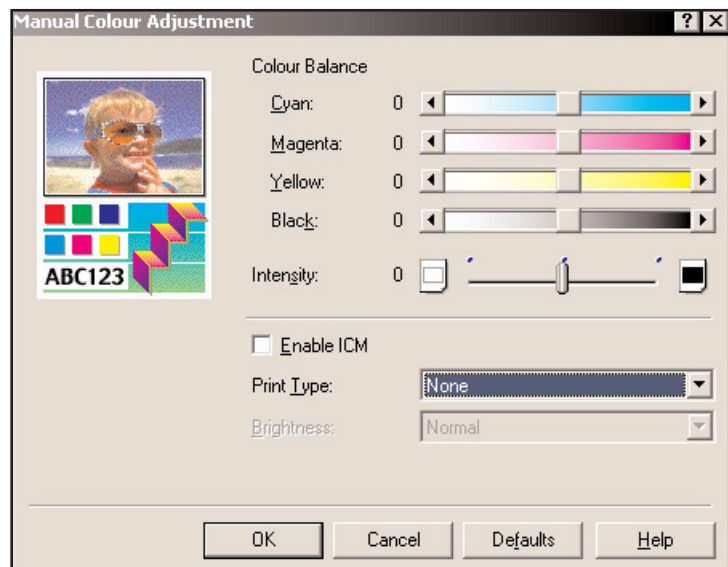
Step 6.

In the “Colour Adjustment” menu select “Manual” and click “Set” (Fig 4)

In the “Print Type” drop down menu select “None”.

Click “OK”

Fig 4



Step 7

PS5: Go to FILE-PRINT

-Select the profile for your preferred media in the “Space” drop down menu. Click “OK” to start printing.

PS 6: Go to FILE-PRINT

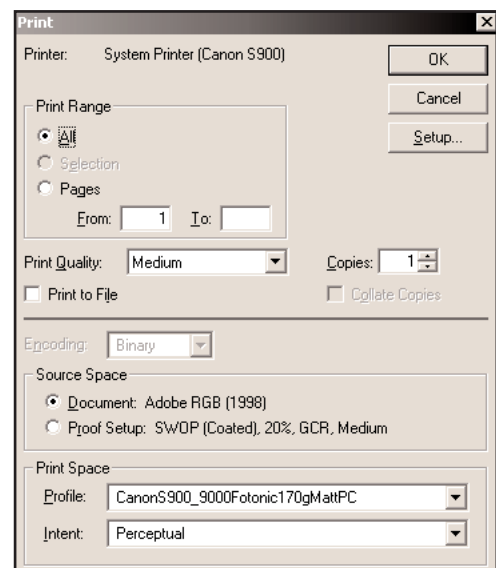
Ensure “Source Space” is set to “Document”.

Select the required printer profile in the “Print Space; Profile” box.

Select “Perceptual” as the rendering intent.

Click “OK” to start printing. (Fig 5)

Fig 5



PS7: Go to FILE-PRINT PREVIEW

Activate “Show More Options”

Select “Color Management” from the drop down menu.

Select the Profile from the “Print Space; Profile” box.

Select “Perceptual” as the rendering intent.

Click Print to start printing. (Fig 6)

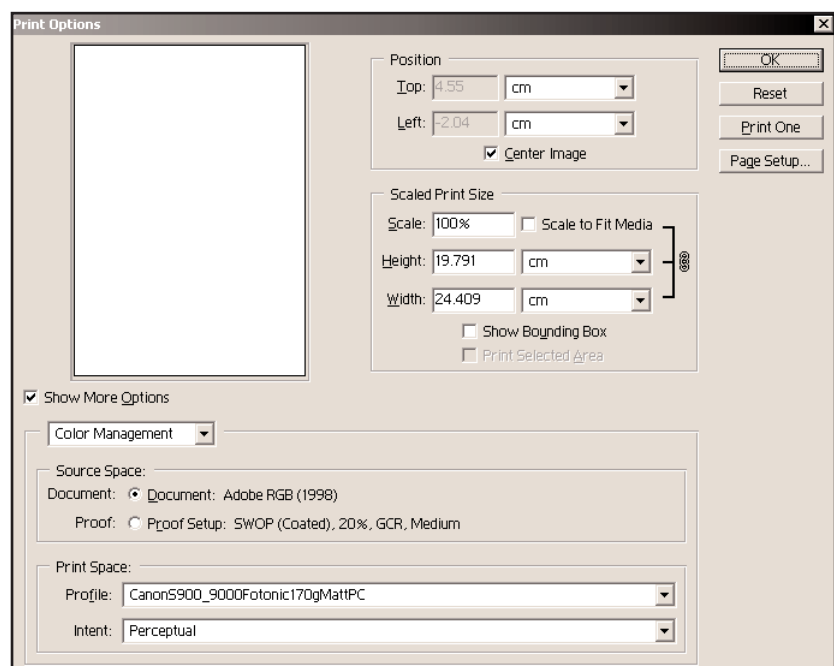


Fig 6