



This document explains how to install the ICC Printer profiles for the Epson Stylus Photo 915 with Lyson Fotonic Inks. There are four profiles available which are suitable for the following papers:

Lyson Darkroom Range Matt Paper.
Lyson Darkroom Range Gloss Paper.
Lyson 240gsm Colour Gloss Paper.
Lyson Fine Art Paper (All Varieties).

Using the profiles is a simple process. Once you have made the correct settings in the print driver you can then select the profile for your paper and the software will do the rest.

For more information on how ICC printer profiles work, setting up Photoshop and calibrating your monitor for accurate colour display, as well as frequently asked questions and troubleshooting, download the "Colour Management 2003" pdf document from the Technical page of the Lyson website, www.lyson.com.

If your print driver does not show all the options listed opposite you may need to update your print driver. Updates are released on the Epson website (www.epson.com) and can be easily downloaded and installed. If you do not delete your existing driver before installation the new driver will appear as a copy (1).

Photoshop places heavy demands upon your PC. Ensure that you have as much RAM installed as you can afford.

There are a large variety of windows operating systems on the market today. Photoshop performance varies only slightly from one operating system to another. Lyson recommends Windows 2000 due to the length of time it has been on the market and it's support for the largest number of print drivers. Lyson printer profiles are compatible with all Microsoft© operating systems.

In the "Preferences - Memory and Image Cache" menu allocate 100% of your system memory to Photoshop. PCs will dynamically allocate RAM according to the number of applications open. Setting the memory allocation to 100% ensures that Windows is able to give Photoshop as much RAM as possible.

Epson Stylus Photo 915 Printer Profile Instructions

PC, Photoshop 5/6/7

Step 1

Drag and drop or cut & paste the profiles into the "Color" folder

C:/WINDOWS/system32/spool/drivers/color

(windows XP/ Windows 2000)

C:/windows/system/color (Windows 95/8)

C:/winNT/system32/color (WindowsNT)

Step 2

Restart Photoshop.

Step 3

With an image open, go to FILE - PAGE SETUP.

Select "Properties"

Select "Custom" and then "Advanced"

Step 4

Select "Photo Quality Glossy Film"

as the Media Type for these papers:

Lyson Darkroom Range Papers.

Lyson 240gsm Colour Gloss Paper.

Select "Photo Paper" for Lyson Fine Art Papers

Select "Photo-1440dpi" as the Print Quality.

Select "No Colour Adjustment" from the Color Adjustment options. Do not select any other options. Click "OK". Alternatively click "Save Settings" and name these settings according to the paper you are using. These settings can then be recalled under the "Custom Settings" drop down menu.

Step 5.

PS5/6/7: Go to FILE-PRINT

Select the profile for your preferred media

in the "Space" drop down menu.

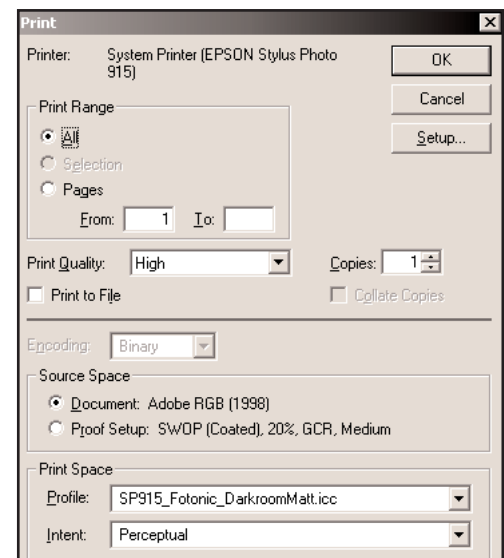
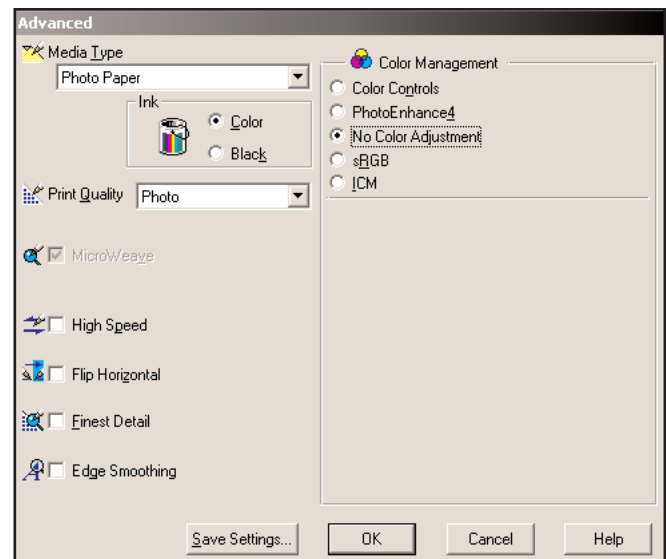
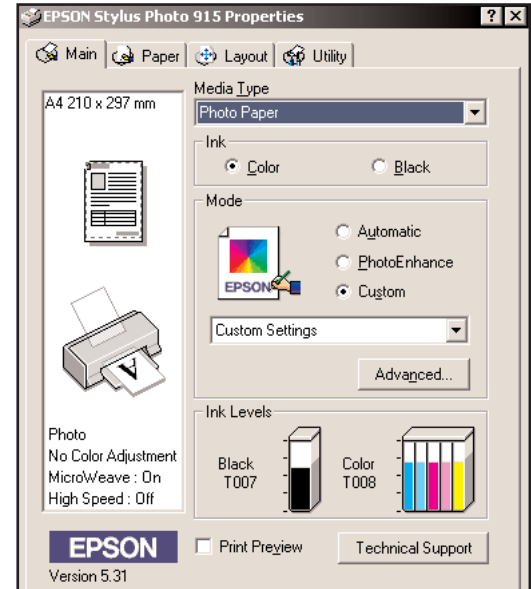
Click "OK" to start printing.

PS6/7: Ensure "Source Space" is set to "Document".

If the "Print Space" option is not visible see next page.

If the profile required is not in the drop down menu then ensure that you have scrolled down as far as the list extends.

Also check that the profile is in the correct folder in the windows sub-directories (see step 1).



To find the Print Space option. PS6/7:

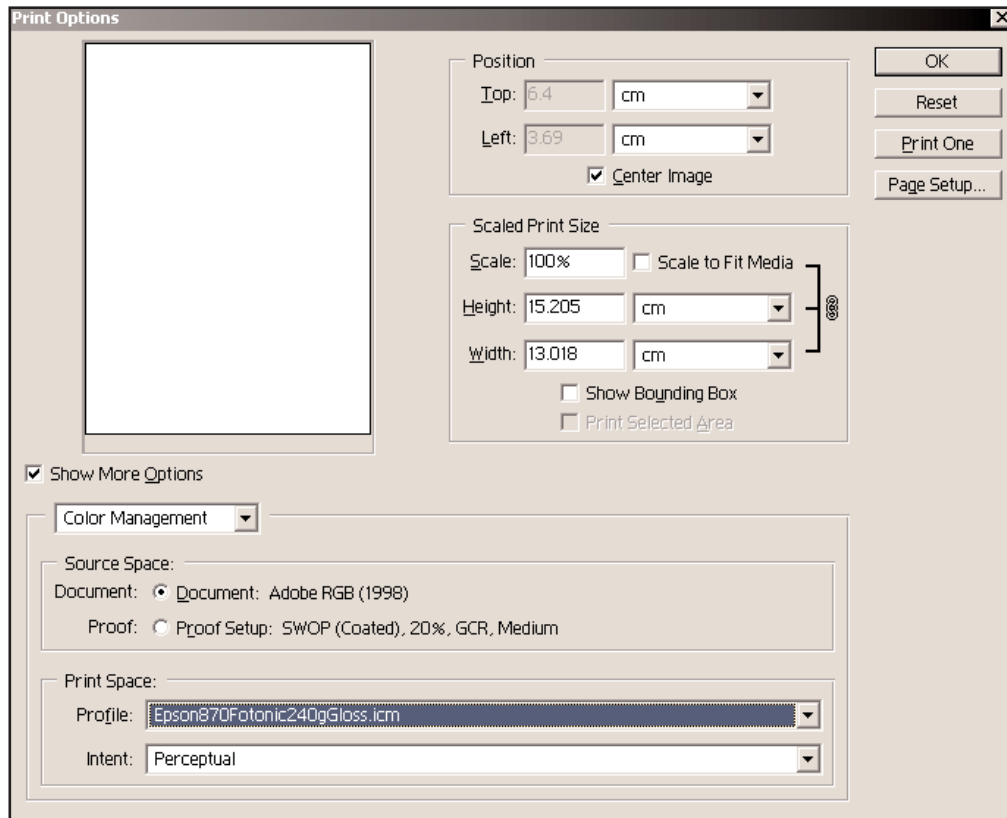
Go to FILE - PRINT PREVIEW

Activate "Show More Options"

Select "Color Management" from the drop down menu. Select the Profile from the "Print Space; Profile" box.

Select "Perceptual" as the rendering intent.

Click "Print" to start printing.



Once this option is activated then the "Print Space" drop down menu will also be visible in FILE - PRINT. You may wish to activate the profile in the "Print Preview" section anyway as there are a number of different output options available here but not under FILE - PRINT.